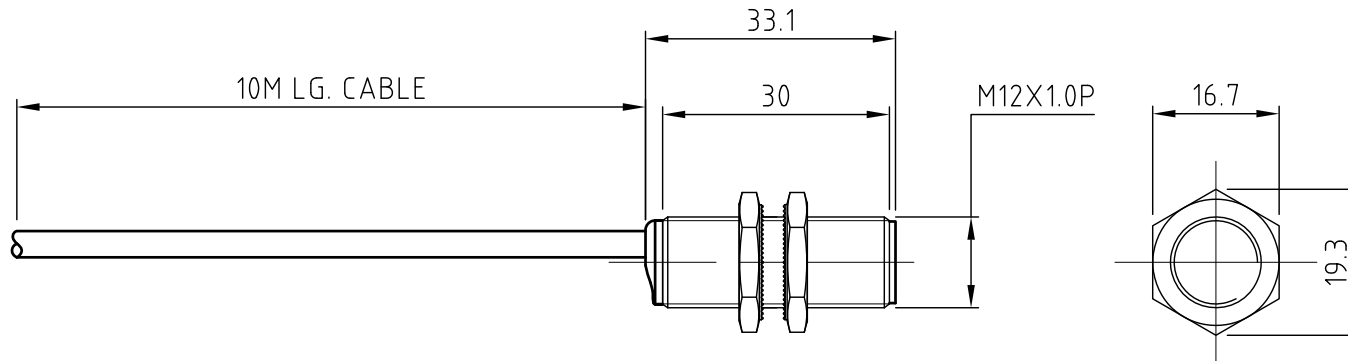

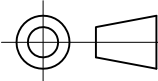


ELECTRICAL SCHEMATIC

TECHNICAL DATA

TYPE	NAMUR SENSOR
INSTALLATION	EMBEDDABLE
ACCURACY	<3%
POWER SUPPLY	8.2 VDC
HYSTERESIS	1 TO 20%
SWITCH POINT DRIFT	± <10%
ACTIVE CURRENT DRAW	>2.2 mA
STATIC CURRENT DRAW	<1 mA
MAX FREQUENCY	2000 Hz
OPERATING TEMPERATURE RANGE	-25° TO 70° C
PROTECTION CLASS	IP67
CABLE	BLUE 2 CORE Ø3.5MM X 10M LONG
DESIGNATION	LR12XAF02FLCN-10M



 <p>TC PROCESS EQUIPMENT COPYRIGHT THRIVE CONSULTING PTY LTD, SYDNEY AUSTRALIA. NO PART OF THIS DRAWING MAY BE REPRODUCED WITHOUT PERMISSION</p>	TITLE		NAMUR SENSOR FOR JWN TECHNICAL DETAILS	
	DRAWN	RHS	13.10.09	
CHECKED	RAS	13.10.09	PS0003702	
ENG. MGR.			SCALE 1:1	REVISION 3
APPR'D	MAA	13.10.09		