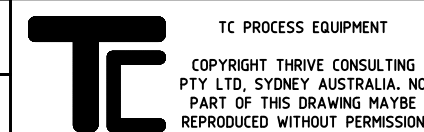


TECHNICAL DATA	
SENSITIVITY	2.0mV/V ± 0.002mV/V
30 MINUTE CREEP	0.03% FULL SCALE
ZERO BALANCE	1% FULL SCALE
ZERO ERROR FROM TEMP. CHANGE	0.02% FULL SCALE/10°C
SPAN ERROR FROM TEMP. CHANGE	0.02% FULL SCALE/10°C
INPUT RESISTANCE	400 OHM ± 10 OHM
OUTPUT RESISTANCE	350 OHM ± 5 OHM
INSULATION RESISTANCE	> 5000 MEGA OHM
OPERATING TEMPERATURE RANGE	-30° TO 70° C
SAFE LOAD LIMIT	150%
LATERIAL LOAD LIMIT	250%
EXCITATION VOLTAGE	RECOMMENDED 10V TO 12V MAX. 15V
PROTECTION CLASS	IP68
CONSTRUCTION	STAINLESS STEEL
CABLE LENGTH	6M x 5MM DIA. PVC
CABLE COLOURS	RED EXCITATION + BLACK EXCITATION - GREEN SIGNAL + WHITE SIGNAL - THK. BLK. SHIELD

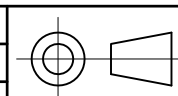
PART NO.	TOTAL ERROR	CAPACITY	A	B	C	D	E	F	G	H	K	L
PS0023901	0.03%	20	76	82.6	48	150	56	9	31.8	48	10	M12 x 1.75P
PS0023902	0.03%	25	100	117	65	150	76	12	38	38	14	M20 x 2.5P
PS0023903	0.03%	30	100	117	65	150	76	12	38	38	10	M12 x 1.75P
PS0023904	0.03%	40	100	117	65	150	76	12	38	38	14	M20 x 2.5P
PS0023905	0.03%	50	107	127	66	200	81	12.7	58	64	14	M20 x 2.5P
PS0023906	0.05%	60	107	127	66	200	81	12.7	58	64	14	M20 x 2.5P
PS0023907	0.05%	70	125	142	91	250	86.5	13	58	64	14	M20 x 2.5P
PS0023908	0.05%	100	165	184	104	300	111.8	20	70	70	20	M20 x 2.5P
PS0023909	0.1%	150	165	184	104	300	111.8	20	70	78	20	M20 x 2.5P
PS0023910	0.1%	200	223	250	157	500	137.5	25	100	112	36	M24 x 3.0P
PS0023911	0.1%	300	223	250	157	500	137.5	25	108	112	36	M24 x 3.0P
PS0023912	0.1%	400	223	250	157	500	137.5	25	108	112	36	M24 x 3.0P

NOTES
 1. DO NOT CUT SUPPLIED LOAD CELL CABLE, LOOP EXCESS CABLE AND CABLE TIE
 2. PRIOR TO INSTALLATION READ AND OBSERVE INSTRUCTION MANUAL



TITLE
 BTA SERIES STAINLESS STEEL
 LOAD CELL

DRAWN	RHS	05.06.09
CHECKED	RAS	05.06.09
ENG. MGR.		
APPR'D	MAA	05.06.09



DRG No.
 PS0023900
 SCALE 1:2
 REVISION 0

A3