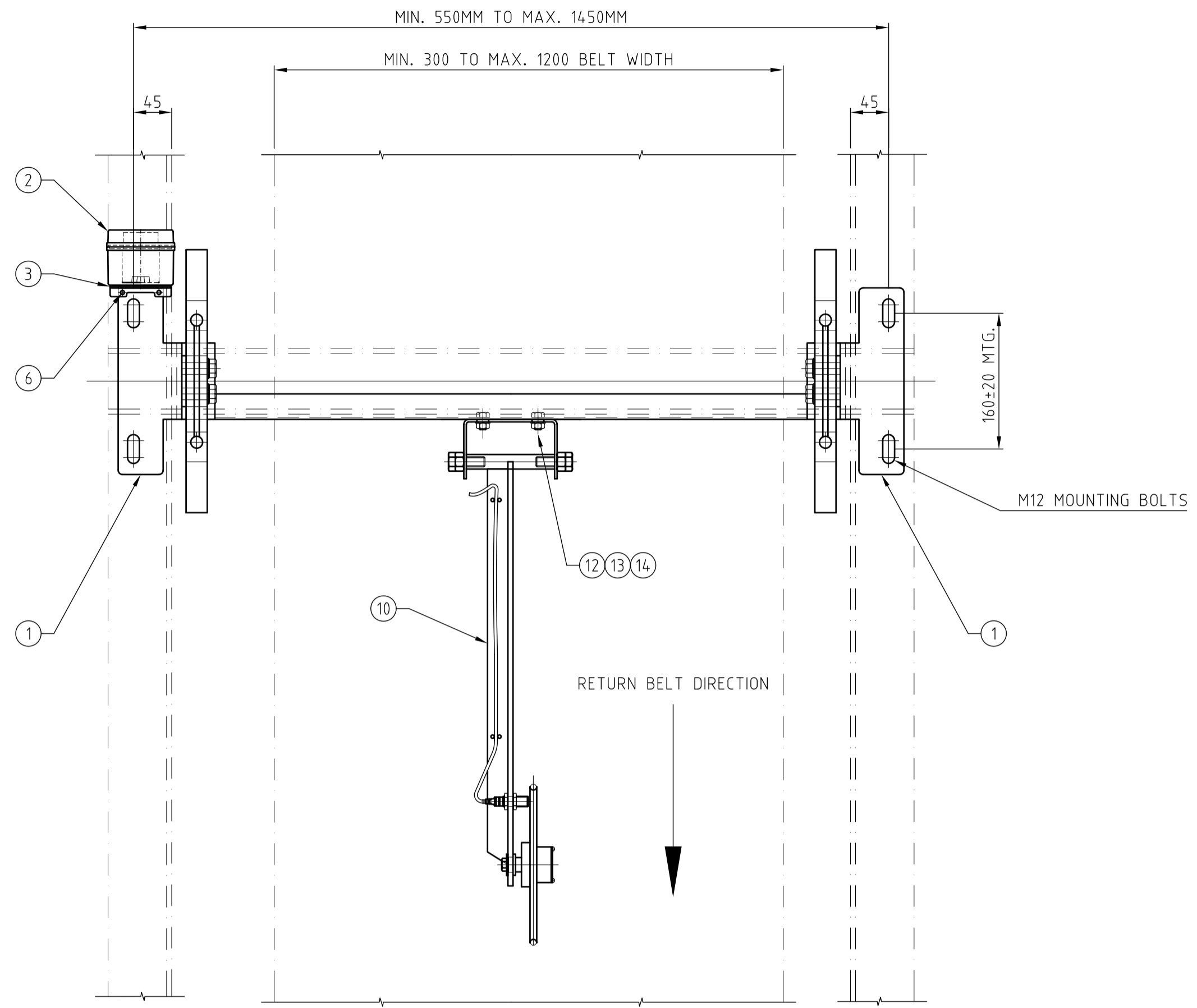
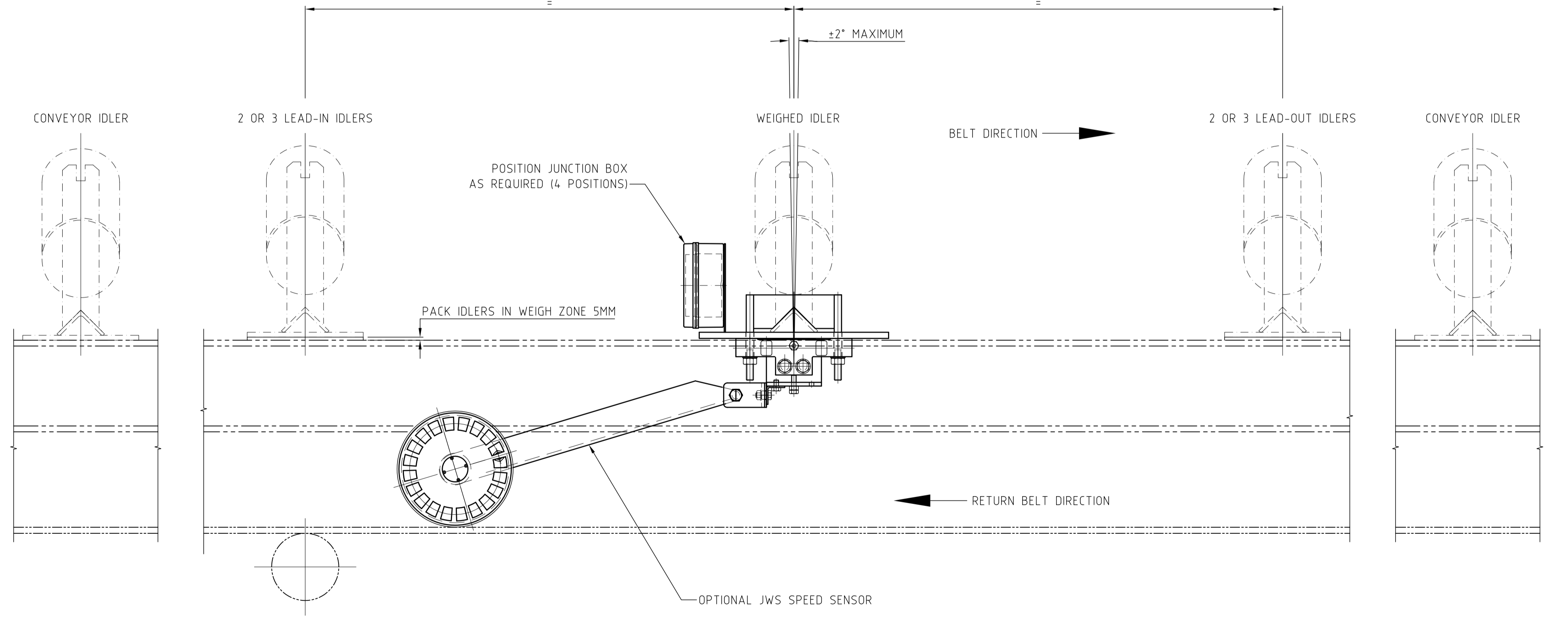
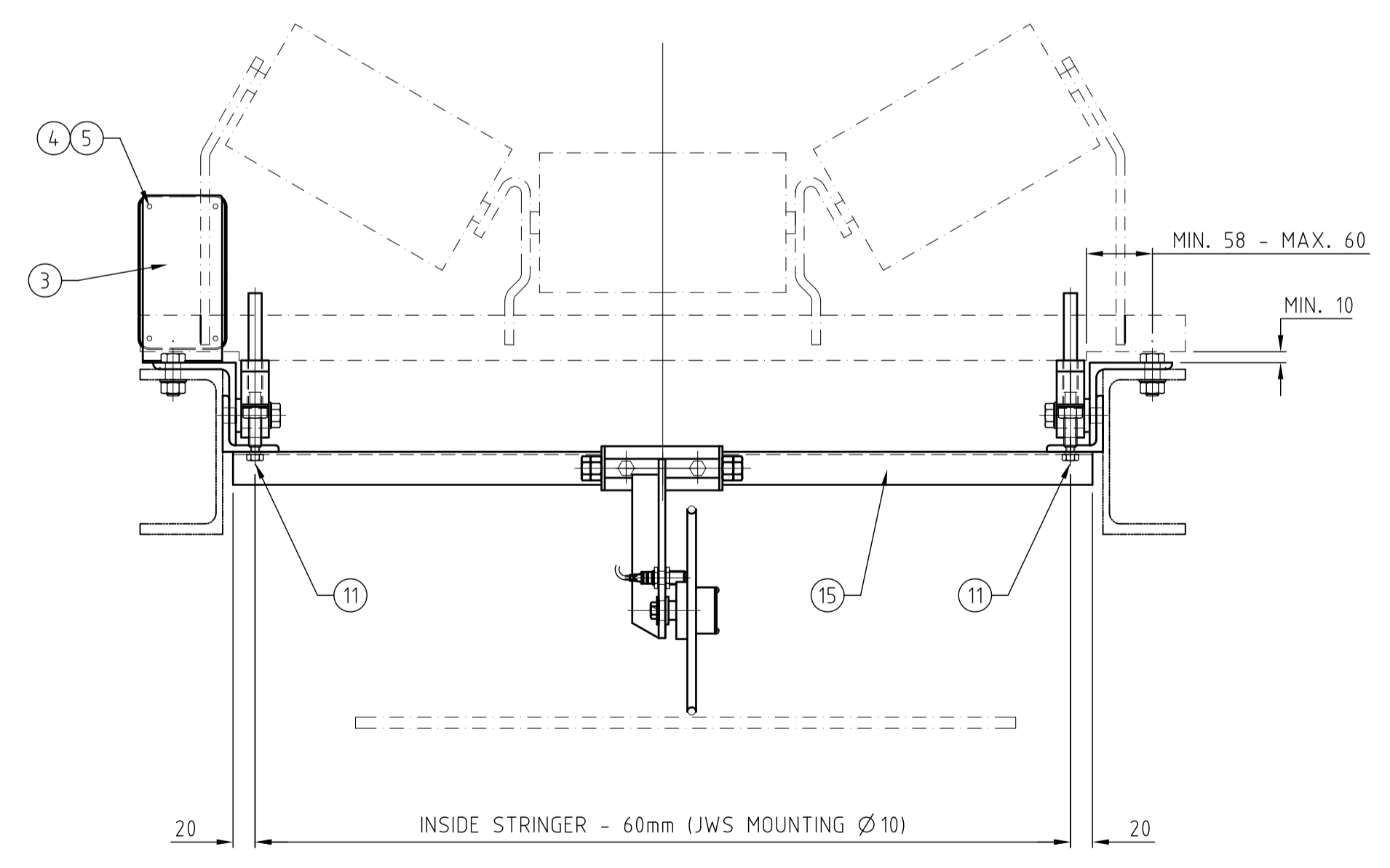


ITEM	QTY	DESCRIPTION	PART/DRG NO.
PS0016007A	1	MBSX MODULE ASSEMBLY 50KG	NU0016008A
PS0016007B		MBSX MODULE ASSEMBLY 100KG	NU0016008B
PS0016007C		MBSX MODULE ASSEMBLY 200KG	NU0016008C
PS0016007D		MBSX MODULE ASSEMBLY 400KG	NU0016008D
2	1	ABS PLASTIC JUNCTION BOX	PS0009601
3	1	JUNCTION BOX MTG. BRACKET	NU0016005
4	4	M4 X 20 PHILIPS PAN HD. SCREW ZP	M4X20PPHZP
5	4	M4 HEX HD. NUT ZP	M4NZP
6	2	M4 X 6 PHILIPS PAN HD. SCREW ZP	M4X6PPHZP
7	4	M12 X 35 HEX. HD. BOLT ZP	M12X35HZP
8	4	M12 HEX HD. NUT ZP	M12NZP
9	2	M12 THK. PLAIN WASHER ZP	M12PWZP
OPTIONAL JWS SPEED SENSOR PART LIST			
10	1	JWS SPEED SENSOR ASSEMBLY	PS0027711
11	2	M8 X 12 HEX. HD. BOLT GR8.8 ZP	M8X12HZP
12	4	M8 PLAIN WASHER THIN ZP	M8PWZP
13	2	M8 X 20 HEX. HD. BOLT GR8.8 ZP	M8X20HZP
14	2	M8 HEX. HD. NUT GR8 ZP	M8NZP
15	1	JWS MOUNTING BRACKET	NU0016006



NOTES

- WEIGH IDLERS MUST BE IN-LINE AND BALANCED TO 0.014NM AND MACHINED TO 0.19MM T.J.R. AND FITTED WITH LOCKING SCREW ADJUSTMENT.
- TO FACILITATE ALIGNMENT 3 LEAD-IN AND 3 LEAD-OUT WEIGH IDLERS ARE RECOMMENDED. FOR BELT SPEEDS LESS THAN 2M/S, 2 LEAD-IN/OUT WE MAY BE USED WITHOUT AFFECTING ACCURACY (ROUTINE ALIGNMENT IS MORE DIFFICULT).
- WEIGHER SHOULD BE LOCATED IN THE CONVEYOR IN ACCORDANCE WITH MANUAL TCM0002
- LEAD-IN, LEAD-OUT AND WEIGHED IDLER (WEIGH ZONE) FRAMES SHOULD BE RAISED 5MM AND ALIGNED TO WITHIN 0.2MM.
- BELT STRINGERS IN THE WEIGH ZONE SHOULD BE CONTINUOUS STEEL MEMBERS (NOT BOLTED) AND MUST BE SELECTED OR SUPPORTED SUCH THAT THE IDLER ALIGNMENT IS MAINTAINED UNDER ALL OPERATING, SITE AND CLIMATIC CONDITIONS.



		TC PROCESS EQUIPMENT COPYRIGHT THORVE CONSULTING PTY LTD, SYDNEY AUSTRALIA. NO PART OF THIS DRAWING MAY BE REPRODUCED WITHOUT PERMISSION		TITLE <b>MBSX.1 SINGLE IDLER BELT SCALE          FOR 500 - 1200mm WIDE BELT          ASSEMBLY AND INSTALLATION DRAWING</b>	
DRAWN	RHS	10.07.08		DRG No. <b>PS0016007</b>	<b>A1</b>
CHECKED	RAS	10.07.08			
ENG. MGR.					
APPR'D	MAA	10.07.08			
SCALE 1:5			REVISION 7		