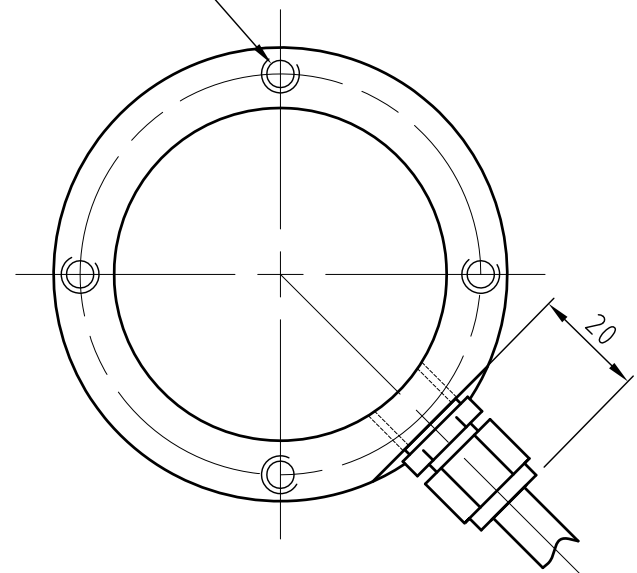


4 HOLES M5 X 0.8P X 10 DEEP



TECHNICAL DATA	
TOTAL ERROR	0.05%
SENSITIVITY	2.85mV/V ± 0.005mV/V
30 MINUTE CREEP	0.03% FULL SCALE
ZERO BALANCE	1% FULL SCALE
ZERO ERROR FROM TEMP. CHANGE	0.03% FULL SCALE/10°C
SPAN ERROR FROM TEMP. CHANGE	0.03% FULL SCALE/10°C
INPUT RESISTANCE	1450 OHM ± 10 OHM
OUTPUT RESISTANCE	14.02 OHM ± 5 OHM
INSULATION RESISTANCE	> 5000 MEGA OHM
OPERATING TEMPERATURE RANGE	-30° TO 70° C
SAFE LOAD LIMIT	150%
LATERAL LOAD LIMIT	200%
EXCITATION VOLTAGE	RECOMMENDED 10V TO 12V MAX. 15V
PROTECTION CLASS	IP68
CONSTRUCTION	STAINLESS STEEL
CABLE LENGTH	8M x 5MM DIA. PVC
CABLE COLOURS	RED EXCITATION + BLACK EXCITATION - GREEN SIGNAL + WHITE SIGNAL - THK. BLK. SHIELD

MODEL	CAPACITY	PART NO.
RTC1	1T	PS0000401
RTC2.2	2.2T	PS0000402
RTC3.3	3.3T	PS0000403
RTC4.7	4.7T	PS0000404

- NOTES
- DO NOT CUT SUPPLIED LOAD CELL CABLE, LOOP EXCESS CABLE AND CABLE TIE
  - PRIOR TO INSTALLATION READ AND OBSERVE INSTRUCTION MANUAL

	TC PROCESS EQUIPMENT COPYRIGHT THRIVE CONSULTING PTY LTD, SYDNEY AUSTRALIA. NO PART OF THIS DRAWING MAYBE REPRODUCED WITHOUT PERMISSION		TITLE MODEL RTC LOAD CELL 4 WIRE 1450 OHM STAINLESS STEEL IP68 LOAD CELL	
	DRAWN RHS 15.03.07	CHECKED RAS 15.03.07	ENG. MGR.	APPR'D MAA 15.03.07
SCALE 1:1			REVISION 0	

A3