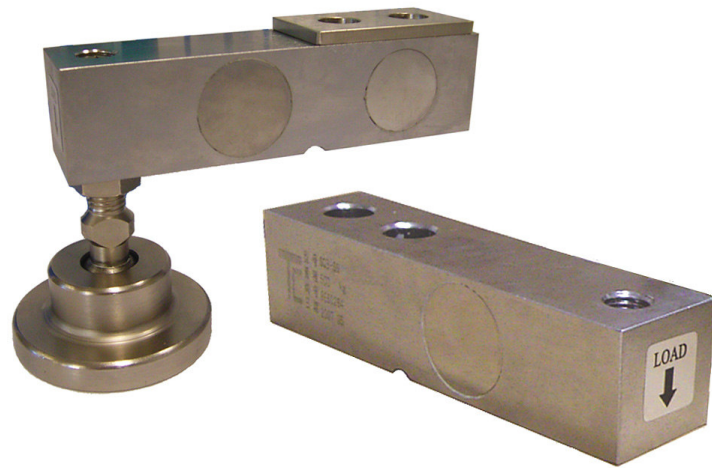


## Shear Beam Load Cell Model BLS and mounts BLM

- Highly accurate and reliable design
- Hermetically sealed, IP67
- Optimized for multiple load cells due to precise calibration
- Fully enclosed option
- Six wire circuit
- 100% Stainless Steel
- Grade 316 Stainless Steel contact surfaces



### Application

Load cells of the BLS type are designed to convert the mechanical input signal, the load, proportionally into the electrical output voltage. Combined with the corresponding BLM mounts, they are very suitable for use with platform, batching, and hopper scales. Their compact design simplifies the integration in any existing construction.

The rugged design of the load cells and mounts ensures reliable operation even in severe environments.

### Construction

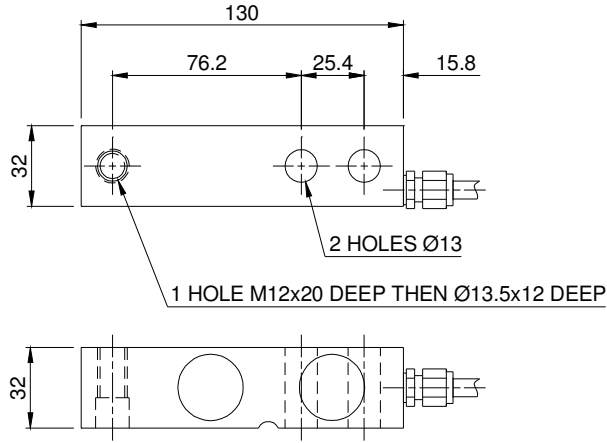
Entirely made of stainless steel and hermetically sealed by laser welding, the BLS load cells are connected by using a high-quality shielded 6-wire PVC cable.

The 6-wire circuit provides for a measuring signal which is insensitive to connecting cables of different lengths.

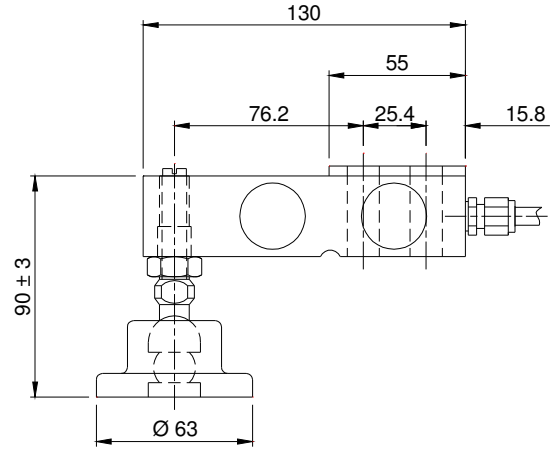
### Functions

- High calibrating accuracy, thus, optimal prerequisites for the parallel connection of multiple load cells
- High degree of measuring signals repeatability
- Damping of side forces through the BLM mount
- Self-centring load cell mount
- Minimal effect on accuracy by side forces

## Standard Dimensions



Load Cell BLS



Load Cell Mount BLM

## Versions

Model	Capacity	Part Number
BLS 0.5t Load Cell	500 kg	PS0004301
BLS 1t Load Cell	1000 kg	PS0004302
BLS 2t Load Cell	2000 kg	PS0004303
BLM Load Cell Mount	500 to 2000 kg	PS0006001

## Technical Data

Total error	0.02%	
Sensitivity	3.0mV/V ± 0.003mV/V	
Creep (30min)	0.02% Full scale	
Zero balance	1% Full scale	
Zero error from temp. change	0.02% Full Scale per 10°C	
Span error from temp. change	0.02% Full Scale per 10°C	
Input resistance	400Ω ± 10Ω	
Output resistance	352Ω ± 2Ω	
Isolation resistance	≥ 5000MΩ	
Operating temperature	-30° to 70°C	
Maximum excitation	Recommended 10V to 12V maximum 15V	
Construction	IP67 Stainless Steel	
Cable length	3M 5mm Dia. PVC	
Cable colours	Red	Excitation +
	Black	Excitation -
	Green	Signal +
	White	Signal -
	Blue	Sense +
	Yellow	Sense -
	Thk. Black	Shield

Dimensions and specifications are subject to change without notice.

